

# PAC 120

Automatic Carton Erection & Closing Machine



BY **stelda**   
Case Packaging Solutions



The WIMCO PAC 120 is engineered for reliable, high-speed automatic cartoning at up to 120 cartons per minute. With seamless adaptability and robust performance, it ensures precise erection, product insertion, and closing of cartons. Ideal for industries like pharmaceuticals, cosmetics, and consumer goods, the PAC 120's rugged design guarantees smooth, efficient packaging and easy integration with upstream and downstream processes.

## Salient Features

- **High-Speed Operation:** 120 cartons per minute for continuous productivity.
- **Adaptive Design:** Supports a wide range of carton sizes
- **Seamless Automation:** Automatic carton erection, product insertion, and online rejection of empty cartons.
- **Integrated Safety & Efficiency:** No product/no carton, no leaflet/no carton, and product bypass for error-free operation.
- **Built for Durability:** Machine clad with SS 304 guards and inbuilt centralised lubrication for long-term reliability.
- **Versatile Handling:** Designed for both reverse and straight cartons.
- **Quick Changeovers:** Tool-less adjustments for different carton sizes.
- **Smart Automation:** Variable frequency drive and optional PLC-based control for flexible operation.

## Technical Specifications

Parameter	Specifications
Machine Type	Automatic Cartoning Machine
Max Mechanical Speed	Up to 120 cartons per minute
Carton Size Range	Min. 18x18x85 mm Max. 84x50x215 mm

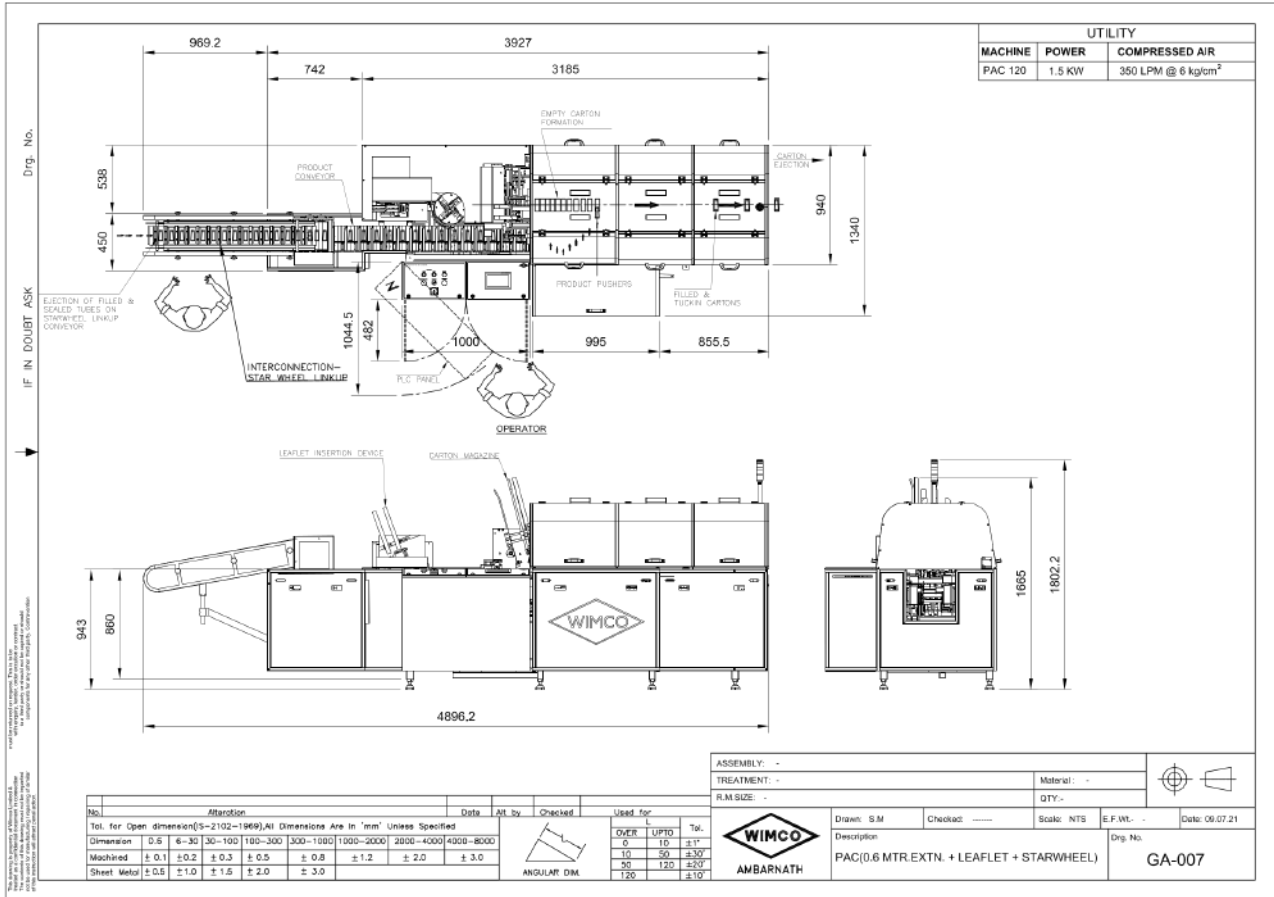
## Utilities Requirement

Parameter	Specifications
Vacuum Requirement	650–700 mm of Hg Free air displacement 450 LPM
Power Consumption	3 Phase, 415 V, 50Hz 1.5 kW (excluding vacuum pump)
Air Consumption	Min: 100 LPM @ 2 kg/cm <sup>2</sup> Max: 450 LPM @ 6 kg/cm <sup>2</sup> or 12 CFM
Vacuum Pump Capacity	450 lpm @ 600 mm vacuum i.e., 0.8 kg/cm <sup>2</sup>
Machine Weight	PAC Cartoner – 2000 kg


## Optional Features

1	Hot melt adhesive applicator for carton closing system	12	Packing of Ampoule and Vial tray into carton with leaflet/booklet
2	Machine guards and cabinets with Acrylic/Polycarbonate/SS 304 covers	13	Bearing packing into cartons (30-40 CPM)
3	Integration with tube filling machine	14	Packing of adhesive metal tubes with applicator
4	Flameproofing	15	Pharma code reader for leaflet & Carton
5	Brush insertion system	16	Upstream bottle collation cum turret for cartoning machine for bottles
6	Automatic pre-folded leaflet insertion device	17	Upstream blister collation cum loading into cartoner pocket for tablets
7	Upstream conveyor for soap cake loading onto cartoner.	18	Conveyor extension system in case cartoner is connected to tube filler.
8	Booklet/Leaflet insertion into cartoner pocket device.	19	Both flaps on the same side format as against opposite orientation.
9	Automatic inkjet printing device mounted for carton printing	20	cGMP compliant
10	Soap/bottle cartoning system	21	21 CFR Compliant
11	Blister insertion attachment		

# Machine Layout



# Contact Us


**01, 02 & 03 Survey No. 55/18,  
 Machohalli Village, Dasanapura  
 Hobli, Bengaluru North, Bengaluru,  
 Karnataka, 560091**


**+91 9971283206**


**stelda.in**



BY

**stelda**  
 Case Packaging Solutions

